



CIAP Newsletter

Upcoming: CIAP Tools for Best Practice Workshop

When: 30 April 2026 08:30 - 12:00

Where: ONLINE

Register

Program

DynaMed and Isabel Trial on CIAP

DynaMed*

From April 2 2026 - June 30 2026 you will have access to the trial of DynaMed and Isabel via CIAP.

DynaMed is a clinical decision support tool that provides access to guidelines, algorithms, discharge planning resources, as well as images and videos. You can create a free profile to follow specific specialties or topics of interest, with updates delivered via email or homepage alerts. Your profile will also allow you to track activity for CPD points.

The DynaMed clinical editorial team continuously monitors the medical literature, critically appraises new evidence, and updates recommendations on a daily basis to ensure content remains current.

Isabel is a differential diagnosis tool accessible within DynaMed, which allows clinicians to input patient details, an extensive range of symptoms, and geographical context. It then generates a ranked list of potential diagnoses based on matching characteristics, highlighting likelihood indicators and key red flags. Each condition links directly to relevant DynaMed content for further guidance on management and clinical decision-making.

[Try DynaMed and Isabel via CIAP here.](#)

Education and Resource Links

DynaMed User
Guide

DynaMed Quick
Overview

DynaMed Detailed
Overview

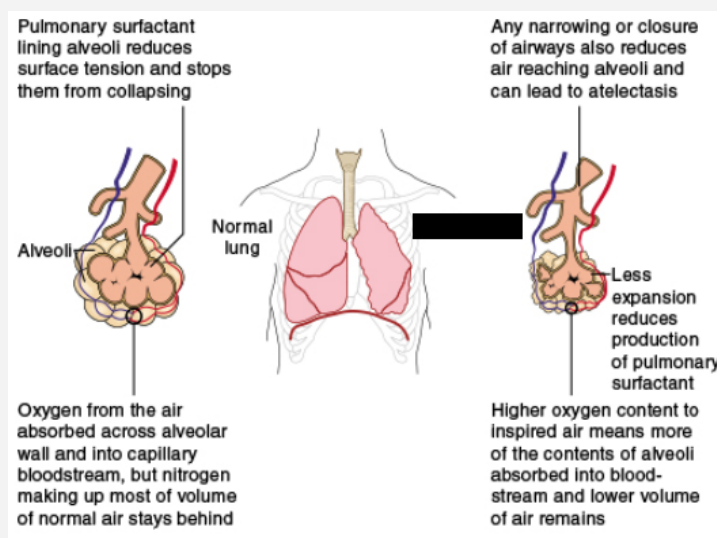
What's the Diagnosis?



The incomplete expansion of alveolar clusters or lung segments, leading to partial or complete lung collapse. Good prognosis with prompt removal of airway obstruction, relief of hypoxia, and re-expansion of collapsed lung.

Pathophysiology

- Closure of alveoli results from a foreign body or mucous plugging, loss of contact between the parietal and visceral pleurae, compression, loss of surfactant, or replacement of parenchymal tissue from scarring or infiltration.
- Because of incomplete expansion, certain regions of the lung are removed from the gas exchange process.
- Unoxygenated blood passes unchanged through these regions and produces hypoxia.
- Lack of production or inactivation of alveolar surfactant causes increased surface tension, permitting complete alveolar deflation.



What's the diagnosis? Find out the answer [here](#) in Lippincott Advisor.

Access provided by CIAP.

Join a CIAP Introductory Overview Session



Join us **online** for a 45-minute **CIAP Overview Session** and learn to navigate CIAP and essential evidence-based resources available to you.

This **short session** covers the **navigation and functionality of a range of essential and most-used evidence-based resources**, demonstrating how you can use them in practice.

Register to join **live** or to receive the **recording!**

The CIAP Overview Session covers an introductory navigation and quick demonstration of CIAP and major resources including DynaMed, BMJ Best Practice, Therapeutic Guidelines, Lippincott Advisor & Procedures, Access Medicine, MIMS, & Micromedex.

21 April 2026

- 12:30-13:15

- Online (MS Teams)

7 May 2026

- 12:30-13:15

- Online (MS Teams)

Register

Register

Is Young People's Mental Health Worse Than in the Past?



Rates of diagnosed mental health conditions have been rising in young people. For example, 11.4% of children in the US currently have a classification of attention deficit/hyperactivity disorder (ADHD). In specific groups this figure is even higher: around 22% of 17 year old boys in the US have received an ADHD classification at some point in their life.

This raises the question of whether young people's mental health is actually worse than in the past, or whether we're simply recognising and labelling what was always there. Many academics point to social media as a key driver for the rise in mental health conditions among young people. They argue that social media interaction changes how young people talk about their feelings and encourages the classification of normal emotional struggles as diagnosable mental health conditions. Most videos shared on TikTok under the hashtag #ADHD have been found to contain unreliable information. Almost 70% of behaviours that were presented as ADHD symptoms in these videos were better described as everyday experiences that "everyone has from time to time."

This illustrates a form of "concept creep": a phenomenon where a shift in societal beliefs about mental health conditions expands what constitutes that condition or, alternatively, reflects a reduced tolerance for the normal ups and downs that are part of life. Alongside this, the "prevalence inflation hypothesis" suggests that increased information about mental health conditions on the one hand causes overinterpretation of common problems as being mental health conditions, while on the other hand improving recognition of previously unidentified cases.

Read more of this article in the [British Medical Journal](#).

Access provided by CIAP.

Liver Transplantation in Alcohol-Related Liver Disease



A 39-year-old woman presents to the emergency department with a 3-day history of fever, progressive jaundice, nausea, anorexia, and altered mental status. Her medical history is notable for a 10-year history of alcohol use disorder, with previous daily intake that averaged up to 250 g of ethanol. She has had multiple admissions to the intensive care unit (ICU) in the past for upper gastrointestinal bleeding caused by esophageal varices and episodes of alcohol-associated hepatitis with acute-on-chronic liver decompensation. Despite repeated engagement by the alcohol care team, she had continued drinking heavily until 3 months ago. Since then, she has remained abstinent, as confirmed by clinical monitoring and regular outpatient visits. Her current medications include lactulose and propranolol; she had had good adherence to both treatment and follow-up until this recent deterioration.

On presentation, her temperature is 38.4°C (101°F) and blood pressure is 92/58 mm Hg; the heart rate is 112 beats per minute and regular. She is disoriented, with asterixis and a Glasgow Coma Scale score of 13 (scores range from 3 to 15, with lower scores indicating a lower level of consciousness). Physical examination shows marked jaundice, scleral icterus, temporal wasting, and a distended, fluid-filled abdomen with shifting dullness.

Read more of this patient case in the [New England Journal of Medicine](#).

Access provided by CIAP.

Upcoming CIAP Events

CIAP Tools for Best Practice Workshop

30 April 2026 08:30-12:00
Virtual (Microsoft Teams)

[Register](#)

CIAP Allied Health EBP & Database Searching Workshop

14 May 2026 08:30-12:00
Virtual (Microsoft Teams)

[Register](#)

Need help with CIAP?

Contact the CIAP [helpdesk](#) 24 hours, 7 days a week.
1300 28 55 33 or visit the CIAP [Support page](#).

[LinkedIn](#) | [Twitter](#)

This email was sent by CIAP Team, eHealth NSW - CC 652950, Tower B, Level 13,
Zenith Centre, 821 Pacific Highway, Chatswood, NEW SOUTH WALES 2067,
Australia to

[Unsubscribe](#)